



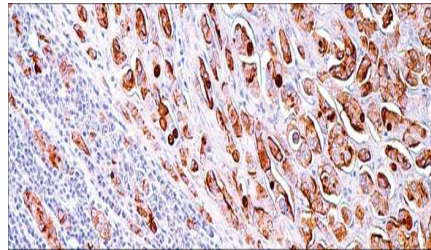
BCA-225

USA IVD

When used in conjunction with antibodies against CEA, CA19-9, and CAS125, this is a useful marker for detecting the site of origin of common metastatic adenocarcinomas.

Mouse Monoclonal, Clone: Cu-18

Control: Breast. **Embedded:** Paraffin and frozen tissue. **Storage:** 2-8°C. **Shelf life:** Up to 36 months. **Isotype:** IgG1 **Cellular localization:** Cytoplasmic



Breast

	Volume
Catalog no.	
BCA-210-1	0.1 ml concentrated
BCA-2010-2	0.5 ml concentrated
BCA-2010-3	1 ml concentrated
BCA-2010-4	1 ml Prediluted
BCA-2010-5	7 ml Prediluted
BCA-2010-5	5 Positive control slides
BCA-2010	