



CD15

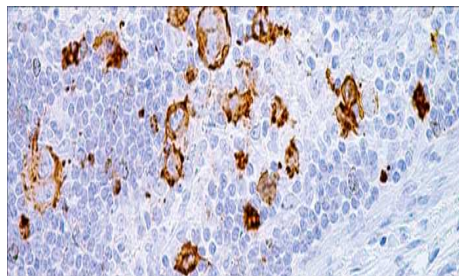
USA IVD

This can be used to distinguish epithelial mesothelioma from adenocarcinoma.

Mouse Monoclonal, Clone: MMA

Control: Hodgkin's Lymphoma. **Embedded:** Paraffin and frozen tissue. **Storage:** 2-8°C.

Shelf life: Up to 36 months. **Isotype:** IgM **Cellular localization:** Cytoplasmic, Membranous.



Hodgkin's Lymphoma

Catalog no.	0.1 ml concentrated
C15-2010-1	0.5 ml concentrated
C15-2010-2	1 ml concentrated
C15-2010-3	1 ml Prediluted
C15-2010-4	7 ml Prediluted
C15-2010-5	5 Positive control slides
C15-2010	