



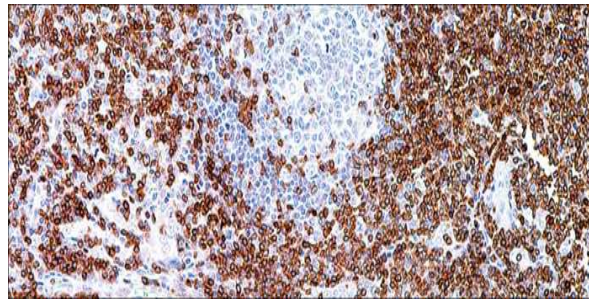
# CD43

USA IVD

When used with CD45 and CD20, effective immunophenotyping of the majority of paraffin, embedded lymphomas can be obtained.

**Mouse Monoclonal, Clone: MT1**

**Control:** Tonsil. **Embedded:** Paraffin and frozen tissue. **Storage:** 2-8°C. **Shelf life:** Up to 36 months. **Isotype:** IgG<sub>1</sub> Cellular **localization:** Membranous



Tonsil

<b>Catalog no.</b>	0.1 ml concentrated
C43-2010-1	0.5 ml concentrated
C43-2010-2	1 ml concentrated
C43-2010-3	1 ml Prediluted
C43-2010-4	7 ml Prediluted
C43-2010-5	5 Positive control slides
C43-2010	

**Volume**