



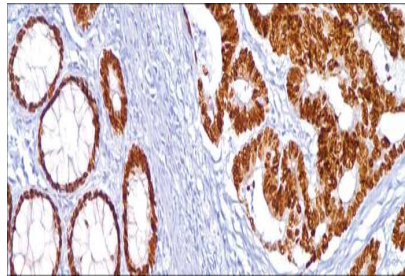
CDX-2

USA IVD

This is useful in distinguishing gastrointestinal origin of metastatic adenocarcinomas and carcinoids.

Rabbit Polyclonal, Clone: EPR2754Y

Control: Colon. **Embedded:** Paraffin and frozen tissue. **Storage:** 2-8°C. **Shelf life:** Up to 36 months. **Isotype:** IgG. **Cellular localization:** Nuclear



Colon

Catalog no.	Volume
CDX-210-1	0.1 ml concentrated
CDX-210-2	0.5 ml concentrated
CDX-210-3	1ml concentrated
CDX-210-4	1ml Prediluted
CDX-210-5	7 ml Prediluted
CDX-210	5 Positive control slides