



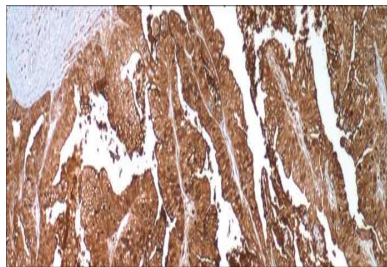
# CEA

## USA IVD

This is used to distinguish between adenocarcinoma and malignant mesotheliomas of the epithelial type.

**Mouse Monoclonal, Clone: CEA31**

**Control:** Colon. **Embedded:** Paraffin and frozen tissue. **Storage:** 2-8<sup>0</sup>C. **Shelf life:** Up to 36 months. **Isotype:** IgG<sub>1</sub> **Cellular localization:** Cytoplasmic



Colon

Catalog no.	Volume
CEA-210-1	0.1 ml concentrated
CEA-210-2	0.5 ml concentrated
CEA-210-3	1ml concentrated
CEA-210-4	1ml Prediluted
CEA-210-5	7 ml Prediluted
CEA-210	5 Positive control slides