



CMV

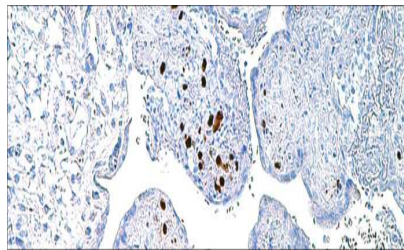
USA ASR

This reacts with two different epitopes.

Mouse Monoclonal, Clone: DDG9/CCH2

Control: CMV Infected Tissue. **Embedded:** Paraffin and frozen tissue. **Storage:** 2-8°C.

Shelf life: Up to 36 months. **Isotype:** IgG₂/K, IgG₁/K **Cellular localization:** Nuclear



CMV Infected Tissue

Catalog no.	Volume
CM-2010-1	0.1 ml concentrated
CM-2010-2	0.5 ml concentrated
CM-2010-3	1ml concentrated
CM-2010-4	1ml Prediluted
CM-2010-5	7 ml Prediluted
CM-2010	5 Positive control slides