



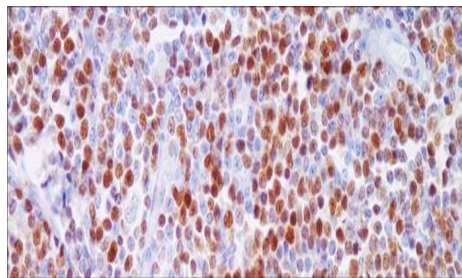
Cyclin D1

USA IVD

This is useful for separating mantle cell lymphomas from SLL's and small cleaved cell lymphomas.

Rabbit Monoclonal, Clone: SP4

Control: Mantle Cell Lymphoma. **Embedded:** Paraffin and frozen tissue. **Storage:** 2-8°C.
Shelf life: Up to 36 months. **Isotype:** IgG **Cellular localization:** Nuclear



Mantle Cell Lymphoma

Catalog no.	Volume
Cy-2010-1	0.1 ml concentrated
Cy-2010-2	0.5 ml concentrated
Cy-2010-3	1ml concentrated
Cy-2010-4	1ml Prediluted
Cy-2010-5	7 ml Prediluted
Cy-2010	5 Positive control slides