



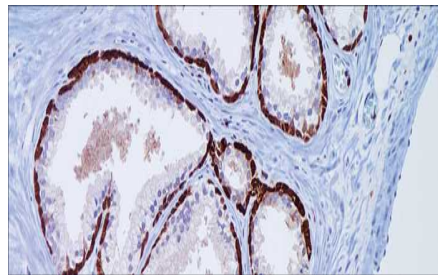
Cystatin A

USA IVD

This helps in the discrimination of prostate carcinoma versus benign prostate.

Mouse Monoclonal, Clone: MRQ-30

Control: Prostate. **Embedded:** Paraffin and frozen tissue. **Storage:** 2-8°C. **Shelf life:** Up to 36 months. **Isotype:** IgG₁ **Cellular localization:** Cytoplasmic



Prostate

Catalog no.	0.1 ml concentrated
Cys-2010-1	0.5 ml concentrated
Cys-2010-2	1ml concentrated
Cys-2010-3	1ml Prediluted
Cys-2010-4	7 ml Prediluted
Cys-2010-5	5 Positive control slides
Cys-2010	

Page 67

Volume