



Cytokeratin 14

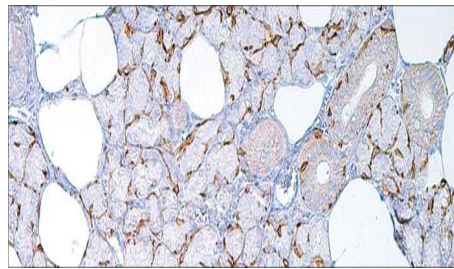
USA IVD

This is useful in differentiating squamous cell carcinomas from other epithelial tumors.

Mouse Monoclonal, Clone: LL002

Control: Squamous Carcinoma. **Embedded:** Paraffin and frozen tissue. **Storage:** 2-8°C.

Shelf life: Up to 36 months. **Isotype:** IgG₃ **Cellular localization:** Cytoplasmic



Squamous Carcinoma

Catalog no.	Volume
Y14-2010-1	0.1 ml concentrated
Y14-2010-2	0.5 ml concentrated
Y14-2010-3	1ml concentrated
Y14-2010-4	1ml Prediluted
Y14-2010-5	7 ml Prediluted
Y14-2010	5 Positive control slides