



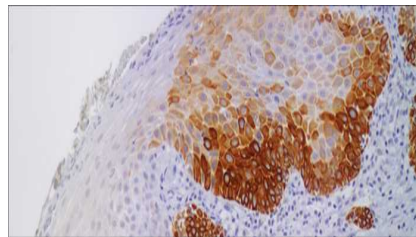
Cytokeratin 17

USA IVD

This is used to distinguish cervical immature squamous metaplasia from high grade cervical intraepithelial neoplasia.

Mouse Monoclonal, Clone: 17.E3

Control: Cervix.(Metaplasia) **Embedded:** Paraffin and frozen tissue. **Storage:** 2-8°C. **Shelf life:** Up to 36 months. **Isotype:** IgG_{2b} **Cellular localization:** Cytoplasmic



Cervix

| | |
|--------------------|---------------------------|
| Catalog no. | 0.1 ml concentrated |
| Y17-2010-1 | 0.5 ml concentrated |
| Y17-2010-2 | 1ml concentrated |
| Y17-2010-3 | 1ml Prediluted |
| Y17-2010-4 | 7 ml Prediluted |
| Y17-2010-5 | 5 Positive control slides |
| Y17-2010 | |

Volume