



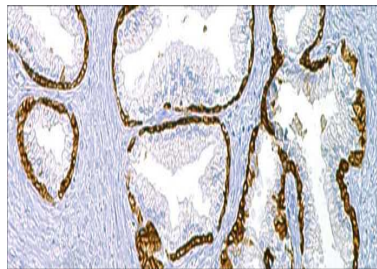
## Cytokeratin (34betaE12)

USA IVD

This can label myoepithelial cells and can distinguish prostatic adenocarcinoma from benign prostate.

**Mouse Monoclonal, Clone: 34betaE12**

**Control:** Prostate. **Embedded:** Paraffin and frozen tissue. **Storage:** 2-8°C. **Shelf life:** Up to 36 months. **Isotype:** IgG<sub>1</sub>/K **Cellular localization:** Cytoplasmic



Prostate

| Catalog no. | Volume                    |
|-------------|---------------------------|
| C3b-2010-1  | 0.1 ml concentrated       |
| C3b-2010-2  | 0.5 ml concentrated       |
| C3b-2010-3  | 1ml concentrated          |
| C3b-2010-4  | 1ml Prediluted            |
| C3b-2010-5  | 7 ml Prediluted           |
| C3b-2010    | 5 Positive control slides |