



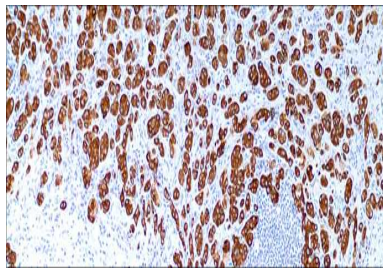
Cytokeratin (35betaH11)

USA IVD

This is a marker for the differentiation of lobular from ductal carcinoma of the breast.

Mouse Monoclonal, Clone: 35betaH11

Control: Prostate. **Embedded:** Paraffin and frozen tissue. **Storage:** 2-8°C. **Shelf life:** Up to 36 months. **Isotype:** IgM/K **Cellular localization:** Cytoplasmic



Prostate

Catalog no.	Volume
C3e-2010-1	0.1 ml concentrated
C3e-2010-2	0.5 ml concentrated
C3e-2010-3	1ml concentrated
C3e-2010-4	1ml Prediluted
C3e-2010-5	7 ml Prediluted
C3e-2010	5 Positive control slides