



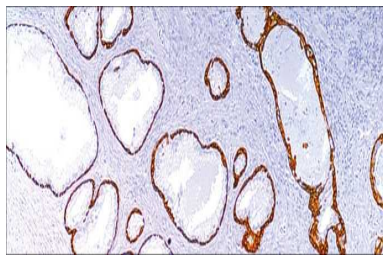
Cytokeratin 5

USA IVD

This is useful in the differential diagnosis of metastatic carcinoma in the pleura versus epithelial mesothelioma.

Rabbit Monoclonal, Clone: EP1601Y

Control: Mesothelioma, Prostate. **Embedded:** Paraffin and frozen tissue. **Storage:** 2-8°C.
Shelf life: Up to 36 months. **Isotype:** IgG **Cellular localization:** Cytoplasmic



Mesothelioma, Prostate

Catalog no.	Volume
Cyt-210-1	0.1 ml concentrated
Cyt-2010-2	0.5 ml concentrated
Cyt-2010-3	1ml concentrated
Cyt-2010-4	1ml Prediluted
Cyt-2010-5	7 ml Prediluted
Cyt-2010	5 Positive control slides

