



Cytokeratin 7

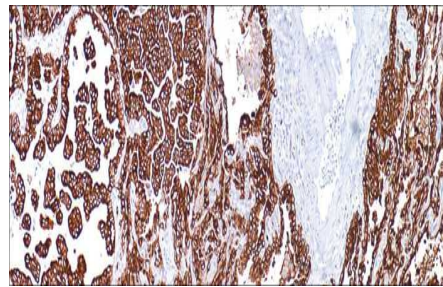
USA IVD

This distinguishes between lung and breast epithelium that stain positive , and colon and prostate epithelial cells that are negative.

Mouse Monoclonal, Clone: OV-TL 12/30

Control: Adenocarcinoma of Lung. **Embedded:** Paraffin and frozen tissue. **Storage:** 2-8°C.

Shelf life: Up to 36 months. **Isotype:** IgG₁/K **Cellular localization:** Cytoplasmic



Adenocarcinoma of Lung

Catalog no.	Volume
Cy7-2010-1	0.1 ml concentrated
Cy7-2010-2	0.5 ml concentrated
Cy7-2010-3	1ml concentrated
Cy7-2010-4	1ml Prediluted
Cy7-2010-5	7 ml Prediluted
Cy7-2010	5 Positive control slides