



Cytokeratin 8 & 18

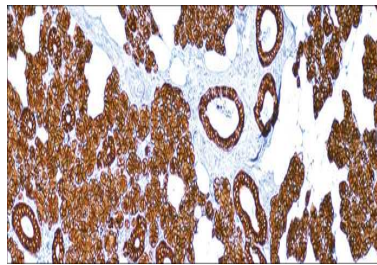
USA IVD

This is used to demonstrate the presence of Paget cells,

Mouse Monoclonal, Clone: B22.1 & B23.1

Control: Prostate, Salivary Gland. **Embedded:** Paraffin and frozen tissue. **Storage:** 2-8°C.

Shelf life: Up to 36 months. **Isotype:** IgG₁ **Cellular localization:** Cytoplasmic



Prostate

Catalog no.	Volume
Cy8-2010-1	0.1 ml concentrated
Cy8-2010-2	0.5 ml concentrated
Cy8-2010-3	1ml concentrated
Cy8-2010-4	1ml Prediluted
Cy8-2010-5	7 ml Prediluted
Cy8-2010	5 Positive control slides