



Cytokeratin Cocktail

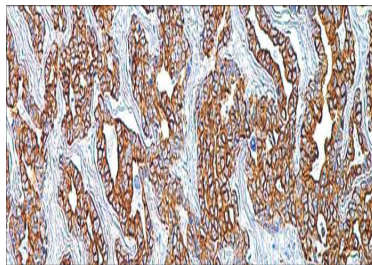
USA IVD

This is used to characterize the source of various neoplasms and to study the distribution of keratin containing cells in epithelia.

Mouse Monoclonal, Clone: AE1 & AE3

Control: Breast, Lung, Colon, Skin. **Embedded:** Paraffin and frozen tissue. **Storage:** 2-8°C.

Shelf life: Up to 36 months. **Isotype:** IgG₁/K **Cellular localization:** Cytoplasmic



Breast, Lung, Colon, Skin

Catalog no.	Volume
CC-2010-1	0.1 ml concentrated
CC-2010-2	0.5 ml concentrated
CC-2010-3	1ml concentrated
CC-2010-4	1ml Prediluted
CC-2010-5	7 ml Prediluted
CC-2010	5 Positive control slides