



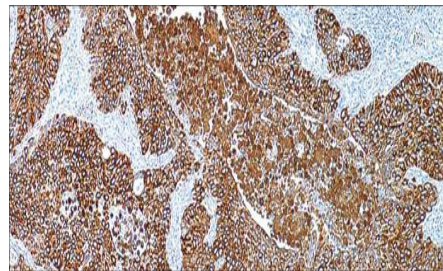
# Cytokeratin, HMW

USA IVD

This is used to observe the distribution of keratin-containing cells in normal epithelia and identify neoplasms derived from such epithelium.

**Mouse Monoclonal, Clone: AE3**

**Control:** Prostate. **Embedded:** Paraffin and frozen tissue. **Storage:** 2-8°C. **Shelf life:** Up to 36 months. **Isotype:** IgG<sub>1</sub> **Cellular localization:** Cytoplasmic



Prostate

<b>Catalog no.</b>	<b>Volume</b>
CK-210-1	0.1 ml concentrated
CK-2010-2	0.5 ml concentrated
CK-2010-3	1ml concentrated
CK-2010-4	1ml Prediluted
CK-2010-5	7 ml Prediluted
CK-2010-6	5 Positive control slides