



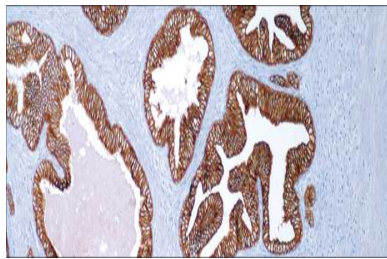
# Cytokeratin (OSCAR)

USA IVD

This is good for distinguishing epithelial carcinoma from non-epithelial malignancies.

**Mouse Monoclonal, Clone: OSCAR**

**Control:** Prostate. **Embedded:** Paraffin and frozen tissue. **Storage:** 2-8°C. **Shelf life:** Up to 36 months. **Isotype:** IgG<sub>2a</sub> **Cellular localization:** Cytoplasmic



Prostate

<b>Catalog no.</b>	<b>Volume</b>
Cos-2010-1	0.1 ml concentrated
Cos-2010-2	0.5 ml concentrated
Cos-2010-3	1ml concentrated
Cos-2010-4	1ml Prediluted
Cos-2010-5	7 ml Prediluted
Cos-2010	5 Positive control slides