



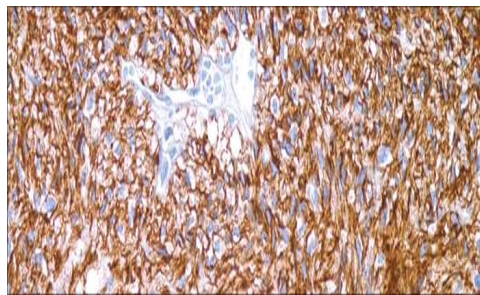
DOG1

USA IVD

This is used in the diagnosis of gastrointestinal stromal tumors.

Rabbit Monoclonal, Clone: SP31

Control: GIST. **Embedded:** Paraffin and frozen tissue. **Storage:** 2-8°C. **Shelf life:** Up to 36 months. **Isotype:** IgG **Cellular localization:** Cytoplasmic, Membranous



GIST

Catalog no.	Volume
DO-2010-1	0.1 ml concentrated
DO-2010-2	0.5 ml concentrated
DO-2010-3	1ml concentrated
DO-2010-4	1ml Prediluted
DO-2010-5	2ml Prediluted
DO-2010	5 Positive control slides