



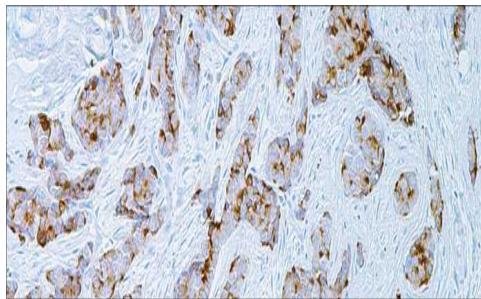
EMA

USA IVD

This is a marker for staining many carcinomas.

Mouse Monoclonal, Clone: E29

Control: Breast. **Embedded:** Paraffin and frozen tissue. **Storage:** 2-8°C. **Shelf life:** Up to 36 months. **Isotype:** IgG_{2a}/K **Cellular localization:** Membranous



Breast

Catalog no.	Volume
EM-2010-1	0.1 ml concentrated
EM-2010-2	0.5 ml concentrated
EM-2010-3	1ml concentrated
EM-2010-4	1ml Prediluted
EM-2010-5	7 ml Prediluted
EM-2010	5 Positive control slides