



EP4)

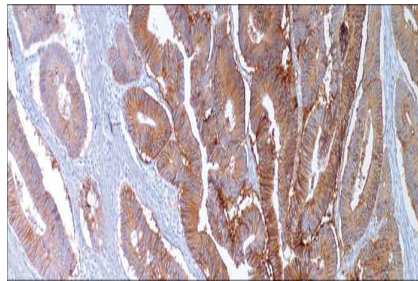
Epithelial Specific Antigen/Ep-CAM (Ber-

USA IVD

This is used to distinguish between malignant mesotheliomas and adenocarcinoma.

Mouse Monoclonal, Clone: Ber-EP4

Control: Colon Carcinoma. **Embedded:** Paraffin and frozen tissue. **Storage:** 2-8°C. **Shelf life:** Up to 36 months. **Isotype:** IgG₁/K **Cellular localization:** Cytoplasmic



Colon Carcinoma

Catalog no.	Volume
Ep-2010-1	0.1 ml concentrated
Ep-2010-2	0.5 ml concentrated
Ep-2010-3	1ml concentrated
Ep-2010-4	1ml Prediluted
Ep-2010-5	7 ml Prediluted
Ep-2010	5 Positive control slides