



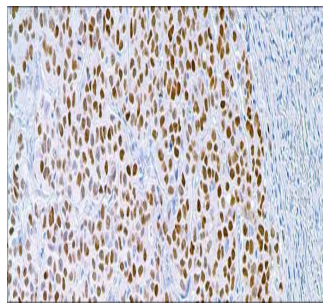
Estrogen Receptor

USA ASR

This antibody stains nuclei of breast epithelial cells and endometrial epithelia , as well as myometrium.

Rabbit Monoclonal, Clone: SP1

Control: Breast, Endometrium. **Embedded:** Paraffin and frozen tissue. **Storage:** 2-8°C.
Shelf life: Up to 36 months. **Isotype:** IgG₁/K **Cellular localization:** Nuclear



Breast, Endometrium

Catalog no.	Volume
ER-2010-1	0.1 ml concentrated
ER-2010-2	0.5 ml concentrated
ER-2010-3	1ml concentrated
ER-2010-4	1ml Prediluted
ER-2010-5	7 ml Prediluted
ER-2010	5 Positive control slides