



GLUT1

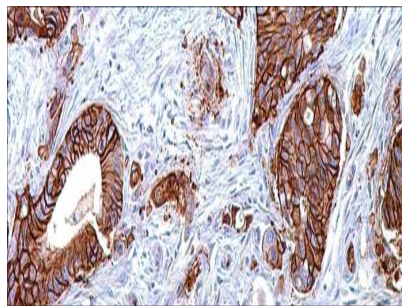
USA IV D

This is a marker in the diagnosis of perineuriomas and can distinguish benign endometrial hyperplasia from atypical endometrial hyperplasia and adenocarcinoma.

Rabbit Polyclonal

Control: Colorectal Carcinoma, Mesothelioma. **Embedded:** Paraffin and frozen tissue.

Storage: 2-8°C. **Shelf life:** Up to 36 months. **Cellular localization:** Membranous



Colorectal Carcinoma

Catalog no.	Volume
GU-2010-1	0.1 ml concentrated
GU-2010-2	0.5 ml concentrated
GU-2010-3	1ml concentrated
GU-2010-4	1ml Prediluted
GU-2010-5	7 ml Prediluted
GU-2010	5 Positive control slides