



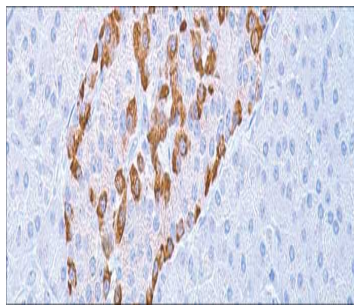
# Glucagon

USA IVD

This is used to detect glucagon-secreting cells and tumors such as glucagonomas.

## Rabbit Polyclonal

**Control:** Pancreas **Embedded:** Paraffin and frozen tissue. **Storage:** 2-8°C. **Shelf life:** Up to 36 months. **Cellular localization:** Cytoplasmic



Pancreas

Catalog no.	Volume
GL-2010-1	0.1 ml concentrated
GL-2010-2	0.5 ml concentrated
GL-2010-3	1ml concentrated
GL-2010-4	1ml Prediluted
GL-2010-5	7 ml Prediluted
GL-2010	5 Positive control slides