



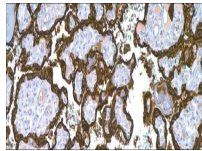
# Human Placenta Lactogen (hpL)

USA IVD

hPL is first detectable in the maternal serum in the fifth week of gestation and reaches a plateau by the thirty-fourth week. This antibody has been demonstrated by immunochemistry in the syncytiotrophoblastic cells of choriocarcinoma.

## Rabbit Polyclonal

**Control:** Placenta **Embedded:** Paraffin and frozen tissue. **Storage:** 2-8°C. **Shelf life:** Up to 36 months. **Cellular localization:** Cytoplasmic



Placenta

## Catalog no.

HL-2010-1

HL-2010-2

HL-2010-3

HL-2010-4

HL-2010-5

HL-2010

## Volume

0.1 ml concentrated

0.5 ml concentrated

1ml concentrated

1ml Prediluted

7 ml Prediluted

5 Positive control slides.