



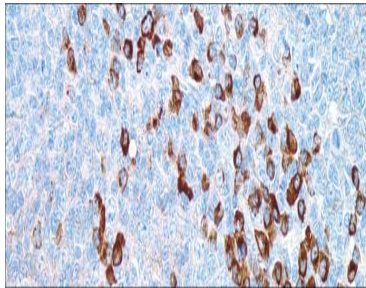
IgG

USA IVD

This is useful when identifying leukemias, plasmacytomas, and B-cell lineage derived lymphomas. Anti-IgG antibody reacts with surface immunoglobulin IgG gamma chains.

Rabbit Polyclonal

Control: Tonsil **Embedded:** Paraffin and frozen tissue. **Storage:** 2-8°C. **Shelf life:** Up to 36 months. **Cellular localization:** Cytoplasmic



Tonsil

Catalog no.

IG-2010-1

IG-2010-2

IG-2010-3

IG-2010-4

IG-2010-5

IG-2010

5 Positive control slides.

Volume

0.1 ml concentrated

0.5 ml concentrated

1ml concentrated

1ml Prediluted

7 ml Prediluted