



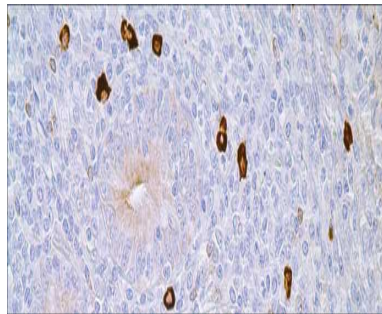
IgM

USA IVD

This is useful when identifying leukemias, plasmacytomas, and B-cell lineage derived Hodgkin's lymphomas. This antibody reacts with surface immunoglobulin IgM μ chains.

Rabbit Polyclonal

Control: Tonsil **Embedded:** Paraffin and frozen tissue. **Storage:** 2-8⁰C. **Shelf life:** Up to 36 months. **Cellular localization:** Cytoplasmic



Tonsil

Catalog no.

IM-2010-1

IM-2010-2

IM-2010-3

IM-2010-4

IM-2010-5

IM-2010

7 ml Prediluted

5 Positive control slides.

Volume

0.1 ml concentrated

0.5 ml concentrated

1ml concentrated

1ml Prediluted

