



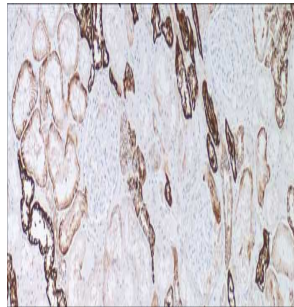
Ksp-Cadherin

USA IVD

This is used to differentiate chromophobe renal cell carcinoma from oncocytoma.

Mouse Monoclonal, Clone: MRQ-33

Control: Kidney **Embedded:** Paraffin and frozen tissue. **Storage:** 2-8⁰C. **Shelf life:** Up to 36 months. **Isotype:** IgG₁ **Cellular localization:** Membranous, Cytoplasmic



Kidney

Catalog no.

KS-2010-1

KS-2010-2

KS-2010-3

KS-2010-4

KS-2010-5

KS-2010

Volume

0.1 ml concentrated

0.5 ml concentrated

1ml concentrated

1ml Prediluted

7 ml Prediluted

5 Positive control slides.