



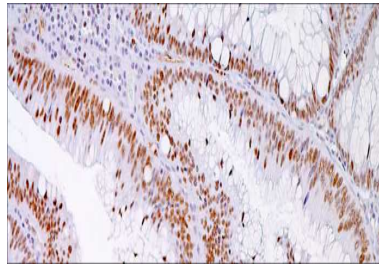
MLH1

USA IVD

MLH1, is a human gene which has been identified as a locus frequently mutated in hereditary nonpolyposis colon cancer. IHC is the most common clinically available method for detection of the proteins with HNPCC have mutations of either MLH1 or MSH2.

Mouse Monoclonal, Clone: G168-728

Control: Colon Embedded: Paraffin and frozen tissue. **Storage:** 2-8°C. **Shelf life:** Up to 36 months. **Isotype:** IgG_{2a} **Cellular localization:** Nuclear



Colon

Catalog no.

ML-2010-1

ML-2010-2

ML-2010-3

ML-2010-4

ML-2010-5

ML-2010

5 Positive control slides.

Volume

0.1 ml concentrated

0.5 ml concentrated

1ml concentrated

1ml Prediluted

7 ml Prediluted