



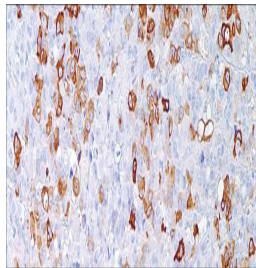
Mammaglobin

USA ASR

This is effective in detecting 85% of breast carcinomas.

Rabbit Monoclonal, Clone: 31A5

Control: Breast Carcinoma **Embedded:** Paraffin and frozen tissue. **Storage:** 2-8⁰C. **Shelf life:** Up to 36 months. **Isotype:** IgG **Cellular localization:** Cytoplasmic



Breast Carcinoma

Catalog no.

5 Positive control slides .

MG-2010-1

MG-2010-2

MG-2010-3

MG-2010-4

MG-2010-5

MG-2010

Volume

0.1 ml concentrated

0.5 ml concentrated

1ml concentrated

1ml Prediluted

7 ml Prediluted