



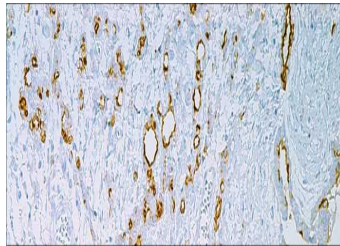
Mesothelial Cell

USA IVD

This is used to distinguish mesothelioma from adenocarcinomas of various origins.

Mouse Monoclonal, Clone: HMBE-1

Control: Mesothelioma **Embedded:** Paraffin and frozen tissue. **Storage:** 2-8°C. **Shelf life:** Up to 36 months. **Isotype:** IgM/K **Cellular localization:** Cytoplasmic, Membranous



Mesothelioma

Catalog no.

MT-2010-1

MT-2010-2

MT-2010-3

MT-2010-4

MT-2010-5

MT-2010

Volume

0.1 ml concentrated

0.5 ml concentrated

1ml concentrated

1ml Prediluted

7 ml Prediluted

5 Positive control slides.