



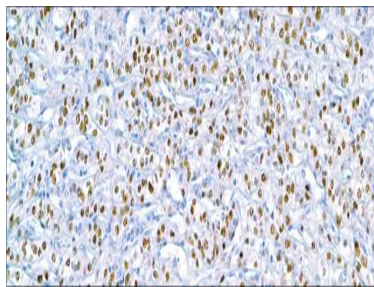
## PAX-2

USA IVD

This is used to distinguish hepatocellular carcinoma from clear cell renal cell carcinoma.

### Rabbit Polyclonal

**Control:** Renal Cell Carcinoma **Embedded:** Paraffin and frozen tissue. **Storage:** 2-8<sup>0</sup>C.  
**Shelf life:** Up to 36 months. **Cellular localization:** Nuclear



Renal Cell Carcinoma

### Catalog no.

PA-2010-1

PA-2010-2

PA-2010-3

PA-2010-4

PA-2010-5

PA-2010

### Volume

0.1 ml concentrated

0.5 ml concentrated

1ml concentrated

1ml Prediluted

7 ml Prediluted

5 Positive control slides