



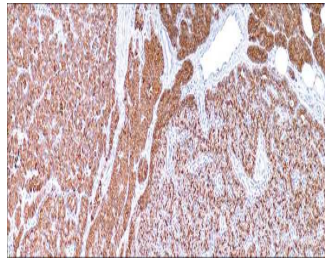
# Parathyroid Hormone (PTH)

USA IVD

This is used to distinguish parathyroid hyperplasia/neoplasms from thyroid and metastatic neoplasms.

**Mouse Monoclonal, Clone: MRQ-31**

**Control:** Parathyroid Tissue **Embedded:** Paraffin and frozen tissue. **Storage:** 2-8°C. **Shelf life:** Up to 36 months. **Isotype:** IgG<sub>2a</sub> **Cellular localization:** Cytoplasmic, Membranous



Parathyroid Tissue

## Catalog no.

PH-2010-1

PH-2010-2

PH-2010-3

PH-2010-4

PH-2010-5

PH-2010

## Volume

0.1 ml concentrated

0.5 ml concentrated

1ml concentrated

1ml Prediluted

7 ml Prediluted

5 Positive control slides