



Renal Cell Carcinoma

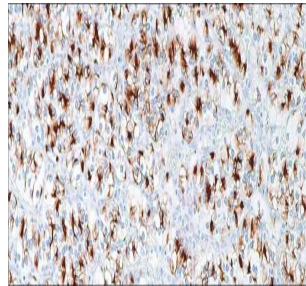
USA IVD

This recognizes a 200kD glycoprotein located in the brush border of the proximal renal tubule.

Mouse Monoclonal, Clone: PN-15

Control: Renal Cell Carcinoma **Embedded:** Paraffin and frozen tissue. **Storage:** 2-8°C.

Shelf life: Up to 36 months. **Isotype:** IgG₁/K **Cellular localization:** Cytoplasmic, Membranous



Renal Cell Carcinoma

Catalog no.

RC-2010-1

RC-2010-2

RC-2010-3

RC-2010-4

RC-2010-5

RC-2010

Volume

0.1 ml Concentrated

0.5 ml concentrated

1ml concentrated

1ml Prediluted

7 ml Prediluted

5 Positive control slides