



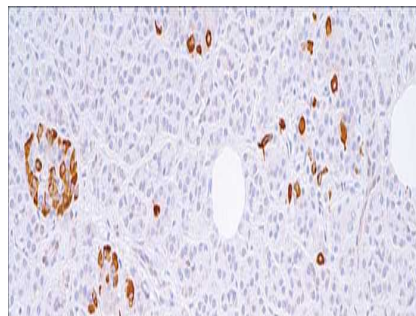
# Somatostatin

USA IVD

This is a marker of D-cells of pancreatic islet cells, which can be used to identify hyperplasia of the pancreatic islets.

## Rabbit Polyclonal

**Control:** Pancreas **Embedded:** Paraffin and frozen tissue. **Storage:** 2-8<sup>0</sup>C. **Shelf life:** Up to 36 months. **Cellular localization:** Cytoplasmic



Pancreas

## Catalog no.

SO-2010-1

SO-2010-2

SO-2010-3

SO-2010-4

SO-2010-5

SO-2010

5 Positive control slides

## Volume

0.1 ml Concentrated

0.5 ml concentrated

1ml concentrated

1ml Prediluted

7 ml Prediluted