



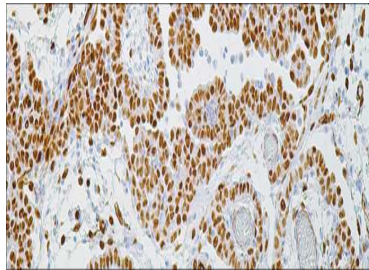
# WT1

## USA IVD

This is identified in proliferative mesothelial cells, malignant mesothelioma, ovarian cystadenocarcinoma, gonadoblastoma, nephroblastoma, and desmoplastic small round cell tumor.

### Mouse Monoclonal, Clone: 6F-H2

**Control:** Mesothelioma **Embedded:** Paraffin and frozen tissue. **Storage:** 2-8°C. **Shelf life:** Up to 36 months. **Isotype:** IgG<sub>1</sub>/K **Cellular localization:** Nuclear



Mesothelioma

### Catalog no.

WT-2010-1

WT-2010-2

WT-2010-3

WT-2010-4

WT-2010-5

WT-2010

### Volume

0.1 ml Concentrated

0.5 ml concentrated

1ml concentrated

1ml Prediluted

7 ml Prediluted

5 Positive control slides