



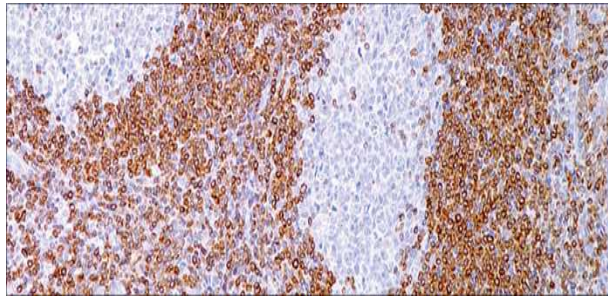
bcl-2

USA IVD

This is valuable when distinguishing between reactive and neoplastic follicular proliferation in lymph node biopsies.

Mouse Monoclonal, Clone: 124

Control: Tonsil. **Embedded:** Paraffin and frozen tissue. **Storage:** 2-8°C. **Shelf life:** Up to 36 months. **Isotype:** IgG₁/K **Cellular localization:** Cytoplasmic



Tonsil

Catalog no.	Volume
BC2-210-1	0.1 ml concentrated
BC2-210-2	0.5 ml concentrated
BC2-210-3	1 ml concentrated
BC2-210-4	1 ml Prediluted
BC2-210-5	7 ml Prediluted
BC2-210	5 Positive control slides