



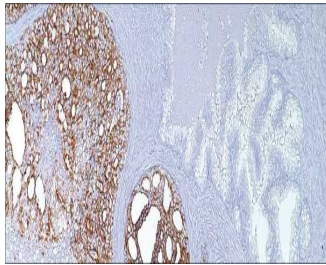
p504s

USA ASR

This is used to identify prostate carcinoma ad prostate intraepithelial neoplasia.

Mouse Monoclonal, Clone: 13H4

Control: Prostate Carcinoma **Embedded:** Paraffin and frozen tissue. **Storage:** 2-8°C. **Shelf life:** Up to 36 months. **Isotype:** IgG **Cellular localization:** Cytoplasmic



Prostate Carcinoma

Catalog no.

PO-2010-1

PO-2010-2

PO-2010-3

PO-2010-4

PO-2010-5

PO-2010

Volume

0.1 ml concentrated

0.5 ml concentrated

1ml concentrated

1ml Prediluted

7 ml Prediluted

5 Positive control slides